

ZONE 2: HISTORIC MUSEUM AREA

MUSEUM AREA INTRODUCTION

The Museum is an important place defining landmark on Wye Road. Its visibility should be enhanced to be a prominent feature of the street. Development of a plaza in front of the museum would help to create an important node and place for people to meet.

The following pages describe possible opportunities for creating a unique landmark place on Wye Road.

EXISTING CONDITIONS/ CONSTRAINTS

1. Museum is not "highlighted" from the road;
2. Nothing is happening in front of plaza to create a "space" or a "destination"
3. Difficult pedestrian access

OPPORTUNITIES (EXAMPLE 1)
Museum could be a potential destination on Wye Road

OPPORTUNITIES (EXAMPLE 2)
There is enough vacant land between Wye Road and the Museum to make a plaza to attract people to socialize in this area.



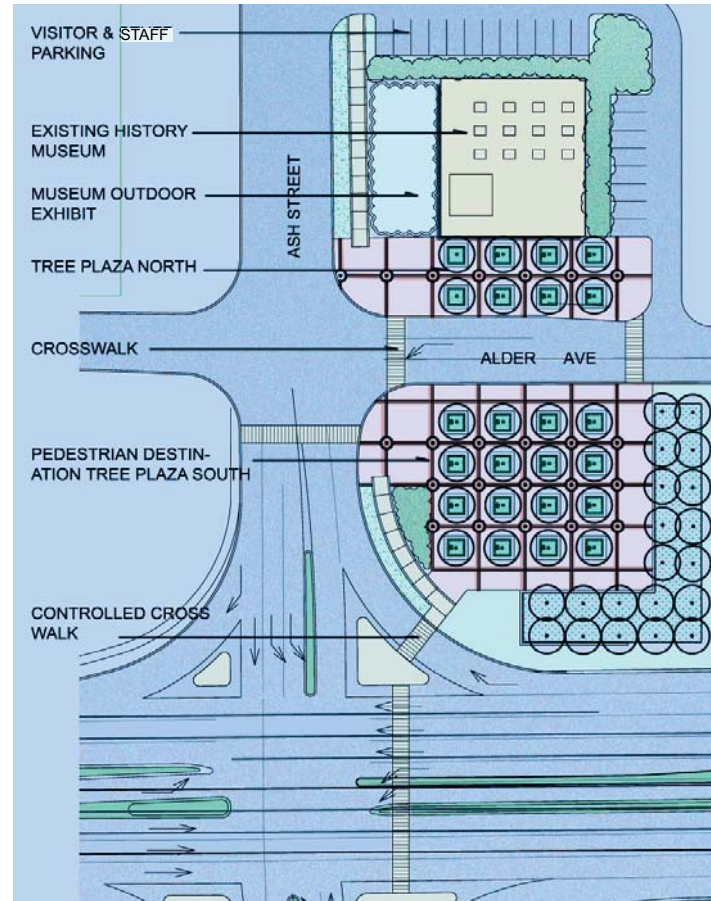
CONTEXT MAP



ZONE 2: HISTORIC MUSEUM AREA

PLAZA CONCEPT

POSSIBLE DESIGN CONCEPT
The graphic shown here illustrates how a patterned geometric design can create a visually simple and readable space; where areas of relaxation and movement can easily be understood by users.

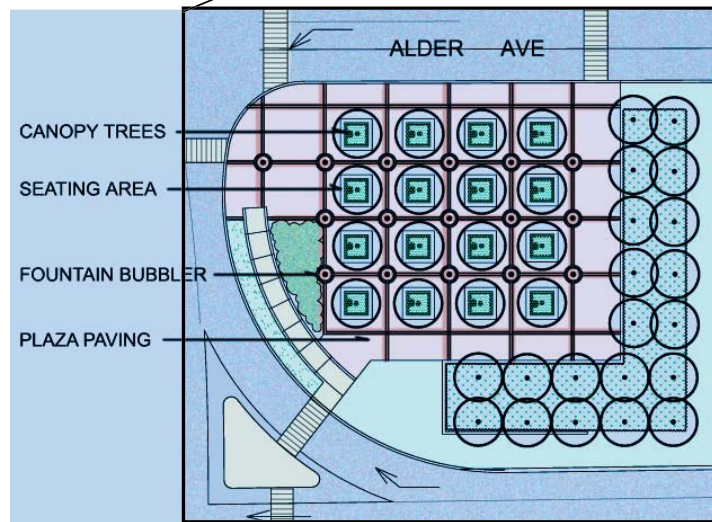
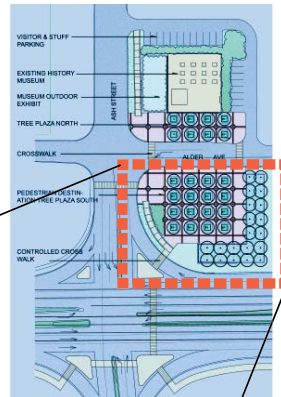


CONTEXT MAP

ZONE 2: HISTORIC MUSEUM AREA

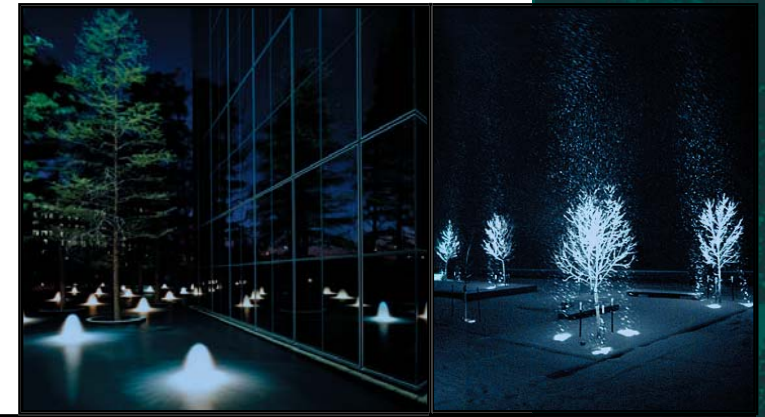
PLAZA CONCEPT

A tree and fountain plaza would create a destination for people to linger and enjoy themselves in the museum district. This concept provides seating opportunities, fountain bubblers for children to play within, canopy trees to provide shade in summer time and allow winter sun to shine through the branches. A well designed lighting plan can also make this area a spectacular place to view at night.



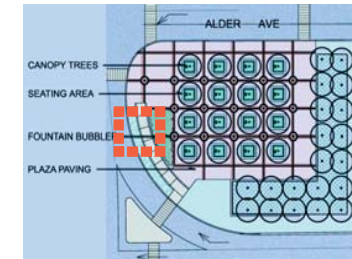
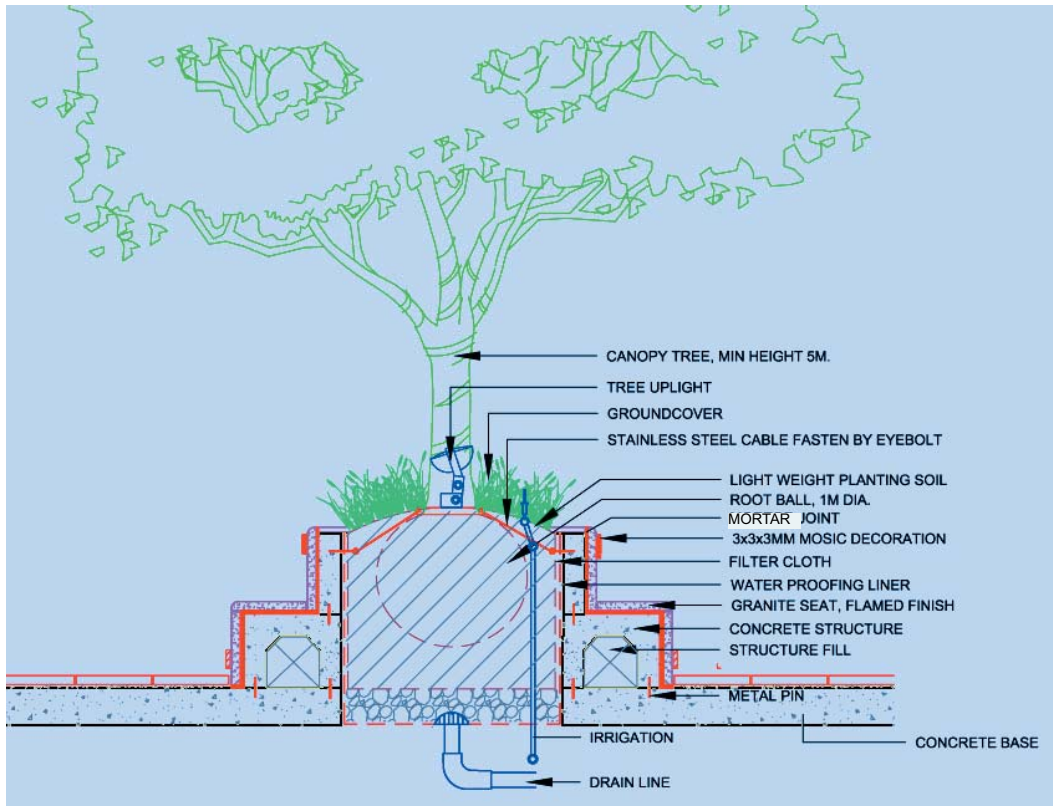
CONTEXT MAP

The images (below) corresponds with the concept (shown left) and illustrates that the plaza designed for the museum area can be a visual foci for the community; with changing beauty and function in every season.



ZONE 2: HISTORIC MUSEUM AREA

PLAZA CONCEPT SEATING



CONTEXT MAP

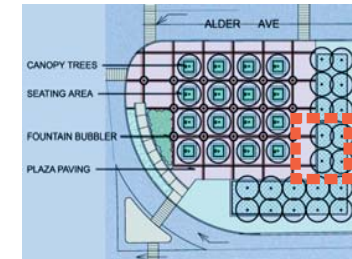
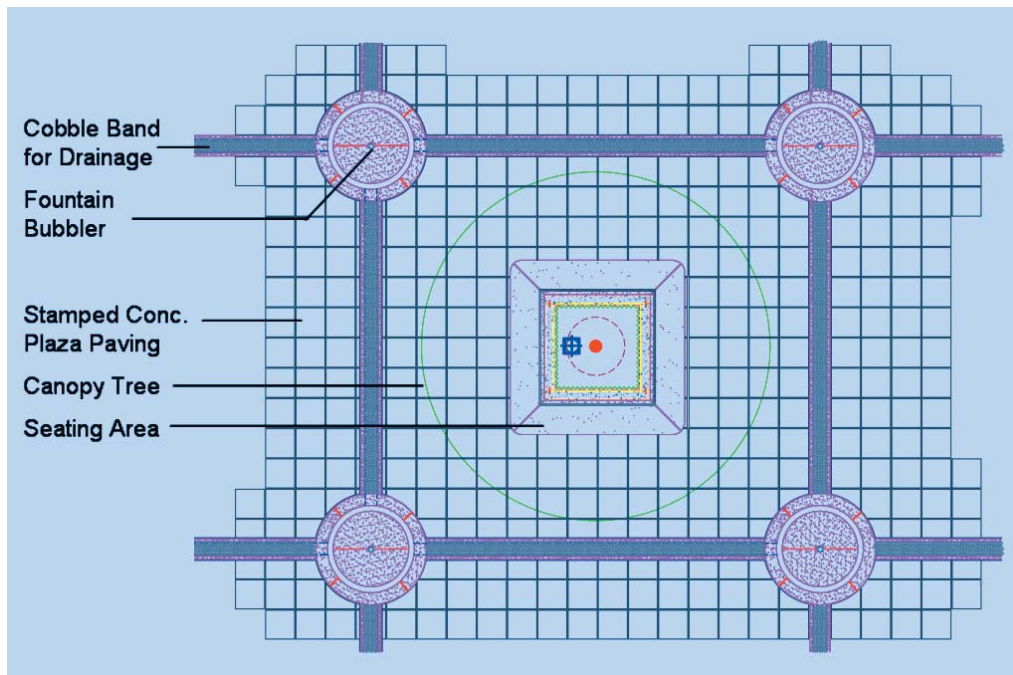
The design shows a tree planter with a seat wall detail not only for the tree and fountain plaza in front of Historic Museum, but also for use in the typical sections along Wye Road where ATCO pipelines set limitations on planting street trees. The continuity of details along Wye Road and the Museum plaza would make the plaza part of the streetscape design through unity of material, form and function.



ZONE 2: HISTORIC MUSEUM AREA

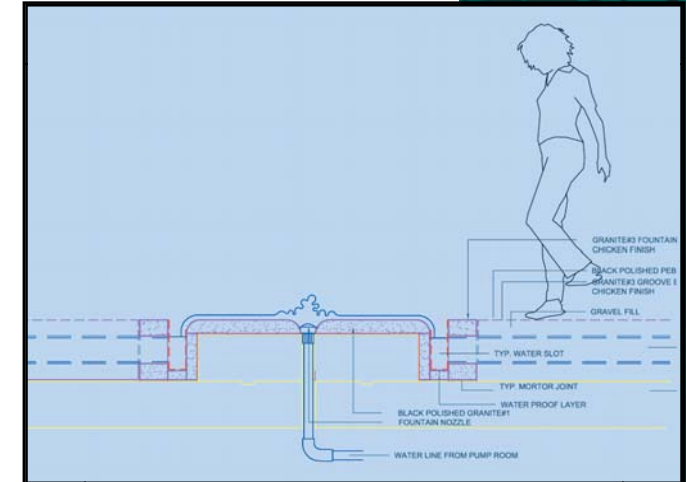
PLAZA CONCEPT ENLARGED LAYOUT

Detail plan showing possible plaza elements and materials.



CONTEXT MAP

Section showing possible character of water feature element in plaza.



Detail section showing possible plaza elements and materials

